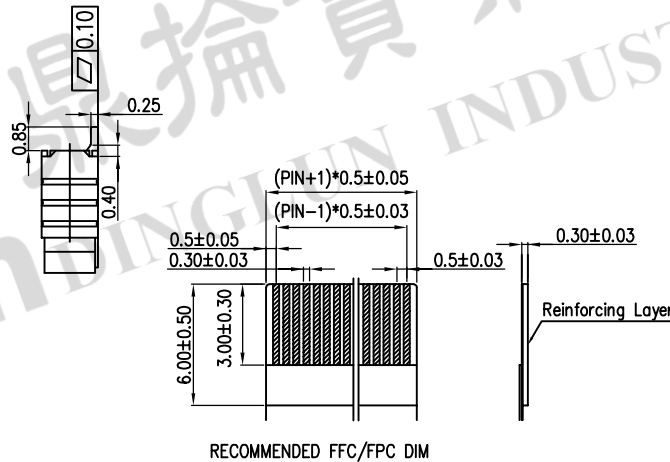
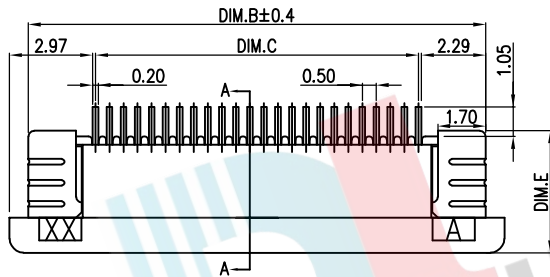
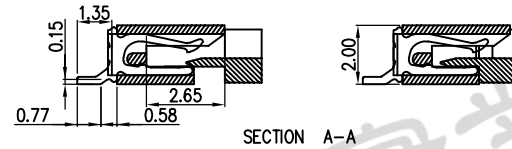
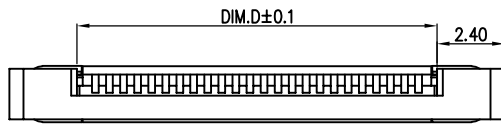
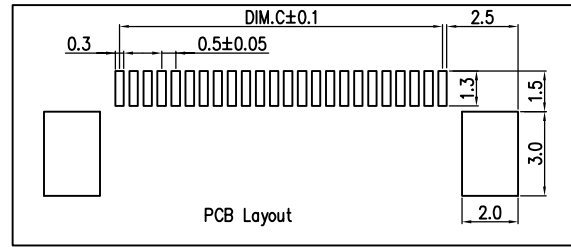
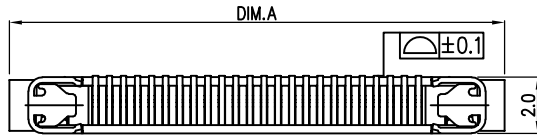


- SPEC :
- Housing:High-Temp Plastic,UL94-V  
Color:Natural
  - Locker:High-Temp Plastic,UL94-V  
Color:Black
  - Contact:Phosphor Bronze  
Initial:30m Ohms Max.  
Voltage Rating:50V AC,DC
  - Solder Tab:BRASS
  - Temperature Rating:-25°C~+85°C
  - Dielectric Withstanding Voltage:500V AC/Min



PIN	DIM. A	DIM. B	DIM. C	DIM. D	DIM. E	PIN	DIM. A	DIM. B	DIM. C	DDIM. D	DIM. E
4	7.6	6.50	1.50	2.60	4.4	35	23.1	22.00	17.00	18.10	4.9
5	8.1	7.00	2.00	3.10		36	23.6	22.50	17.50	18.60	
6	8.6	7.50	2.50	3.60		37	24.1	23.00	18.00	19.10	
7	9.1	8.00	3.00	4.10		38	24.6	23.50	18.50	19.60	
8	9.6	8.50	3.50	4.60	39	25.1	24.00	19.00	20.10		
9	10.1	9.00	4.00	5.10	40	25.6	24.50	19.50	20.60		
10	10.6	9.50	4.50	5.60	41	26.1	25.00	20.00	21.10		
11	11.1	10.00	5.00	6.10	42	26.6	25.50	20.50	21.60		
12	11.6	10.50	5.50	6.60	43	27.1	26.00	21.00	22.10		
13	12.1	11.00	6.00	7.10	44	27.6	26.50	21.50	22.60		
14	12.6	11.50	6.50	7.60	45	28.1	27.00	22.00	23.10		
15	13.1	12.00	7.00	8.10	46	28.6	27.50	22.50	23.60		
16	13.6	12.50	7.50	8.60	47	29.1	28.00	23.00	24.10		
17	14.1	13.00	8.00	9.10	48	29.6	28.50	23.50	24.60		
18	14.6	13.50	8.50	9.60	49	30.1	29.00	24.00	25.10		
19	15.1	14.00	9.00	10.10	50	30.6	29.50	24.50	25.60		
20	15.6	14.50	9.50	10.60	51	31.1	30.00	25.00	26.10		
21	16.1	15.00	10.00	11.10	52	31.6	30.50	25.50	26.60		
22	16.6	15.50	10.50	11.60	53	32.1	31.00	26.00	27.10		
23	17.1	16.00	11.00	12.10	54	32.6	31.50	26.50	27.60		
24	17.6	16.50	11.50	12.60	55	33.1	32.00	27.00	28.10		
25	18.1	17.00	12.00	13.10	56	33.6	32.50	27.50	28.60		
26	18.6	17.50	12.50	13.60	57	34.1	33.00	28.00	29.10		
27	19.1	18.00	13.00	14.10	58	34.6	33.50	28.50	29.60		
28	19.6	18.50	13.50	14.60	59	35.1	34.00	29.00	30.10		
29	20.1	19.00	14.00	15.10	60	35.6	34.50	29.50	30.60		
30	20.6	19.50	14.50	15.60							
31	21.1	20.00	15.00	16.10							
32	21.6	20.50	15.50	16.60							
33	22.1	21.00	16.00	17.10							
34	22.6	21.50	16.50	17.60							

ORDERING INFORMATION:

FPCZ - 05200 DHUE -xx -x -x

- PLATING: T=TIN G=GOLD FLASH
- PACKING T=TUBE R=REEL
- NO. of contacts
- Series name
- PITCH=0.5mm
- FPC SERIES



**鼎掄實業有限公司**  
DINGLUN INDUSTRIAL CO., LTD.

TITLE  
FPC 0.5PH 2.0H 抽屜貼上接

DRAWN: michael lin 2017/08/22  
CHECKED: Eddie Liu 2017/08/22  
APPROVED: Eddie Liu 2017/08/23

P/N NO. FPCZ-05200DHUE-xx-xx  
UNIT mm  
REV. A

REV.	REASONS	DATE	DRAWN